

THE NORTH PORT EDC WHERE VISION & FUTURE MEET

We foster and encourage
positive and measurable economic development
through entrepreneurial thinking,
collaboration and innovation.

NORTH PORT EDC BOARDS

BOARD OF DIRECTORS

Chair - Robert Rosenberg

Retired Tourism Executive

Vice Chair - Freddy Koenig

Sarasota Memorial Hospital - NPER

Secretary /Treasurer - Jamie Bunkley

TaxSavers

Immediate Past Chair: Mimi Steger

North Port Taekwondo

Adam Bartolotta - ROI Media

Peter Bartolotta - Acuity Group Management

Andy Gerberich - North Port Computers

TinaRae Gregoire - Achievement Learning Center

David Jones - North Port High School

Mark Klingel - CPA

Ken Maturo - Vision North Port

Richard Satcher - Peace River Medical Center

Cindy Spirk - Real Estate Professional

Carla Sykes - CORE Construction

ADVISORY BOARD

Dave Dignam – Owner, Key Agency

Ted Ehrlichman – COO, Suncoast Workforce

Susan Flagel – Flagel Pediatric & Family Medicine

Scott Greer – Regional President, BB&T Bank

Timothy Hensey – VP, Gilbane Building Company

Darren Inverso – Partner,

Norton, Hammersley, Lopez & Skokos

Stephen Johnson – VP, Harvard Jolly Architects

Angela Massaro-Fain – President,

Grapevine Communications Advertising Agency

Gene Matthews – Retired, Real Estate/Insurance

Tom Rice – CEO, Fawcett Memorial Hospital

Beth Wilson – Owner, TaxSavers

John Wiseman – President, CORE Construction

Peter Wozniak – CEO, Venice Regional Hospital

NORTH PORT EDC MEMBERS

Achievements Learning Center
Adache Group Architects
BB&T Bank
CADwerks
Calusa National Bank
Cindy Spirk
ClikWiz
Core Construction
Fawcett Memorial Hospital
Fourth Quarter Properties
Gene Matthews
Gilbane Building Company
Grapevine Communications Advertising Agency
Gulf Coast Builders Exchange
Gulf Coast Community Foundation
Halfacre Construction
Harvard Jolly Architecture
Jolotta Enterprises
J.E. Charlotte Construction Corp
Ken Maturo
Key Agency

Louise Hall
Mark Asperilla
Mark Klingel, CPA
North Port Area Chamber of Commerce
North Port Computers
North Port High School
North Port Taekwondo
Norton, Hammersley, Lopez & Skokos
Peace River Medical Center
Publix
Robert McMillan
Robert Rosenberg
ROI Media
Sarasota Memorial Hospital
School of Opportunity
Suncoast Workforce
USF Sarasota-Manatee
TaxSavers
The Power and Light Company, LLC
Vaccaro Co. of Naples/The Ostermann Co.
Venice Regional Medical Center
Vision North Port
Walmart
Watermark Engineering
WMS Sarasota, LLC

2011-2012 ACTION Initiatives

Active Collaboration That Inspires Oppportunity Now

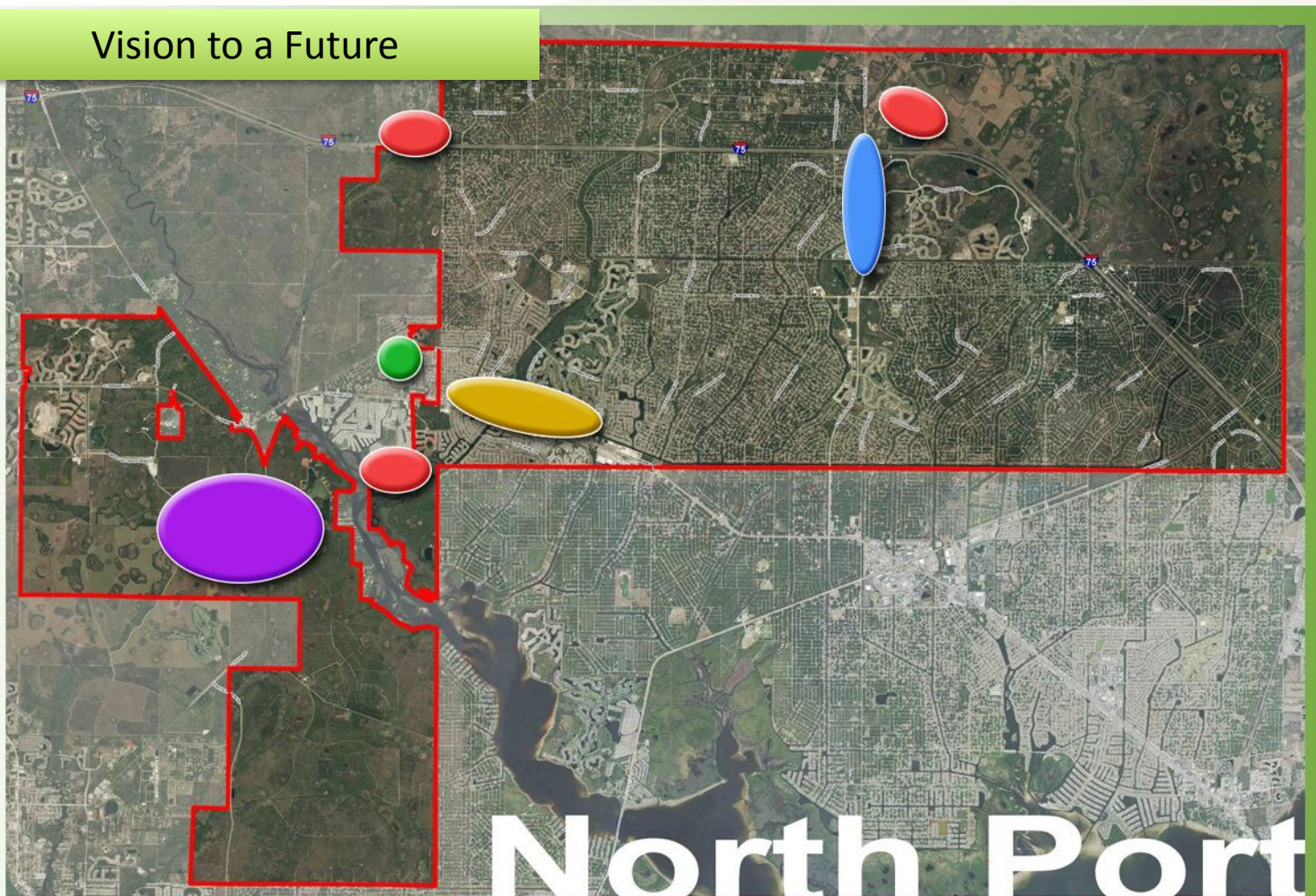
ACTION Initiative Objectives

To develop a community plan which engages an integrated set of economic catalysts that encompasses the entire city of North Port. The plan will have specific projects with defined outcomes and realistic time-frames.

These outcomes will focus around ACTION Initiatives, each of which will be driven by a team of NPEDC members who will focus on the following outcomes:

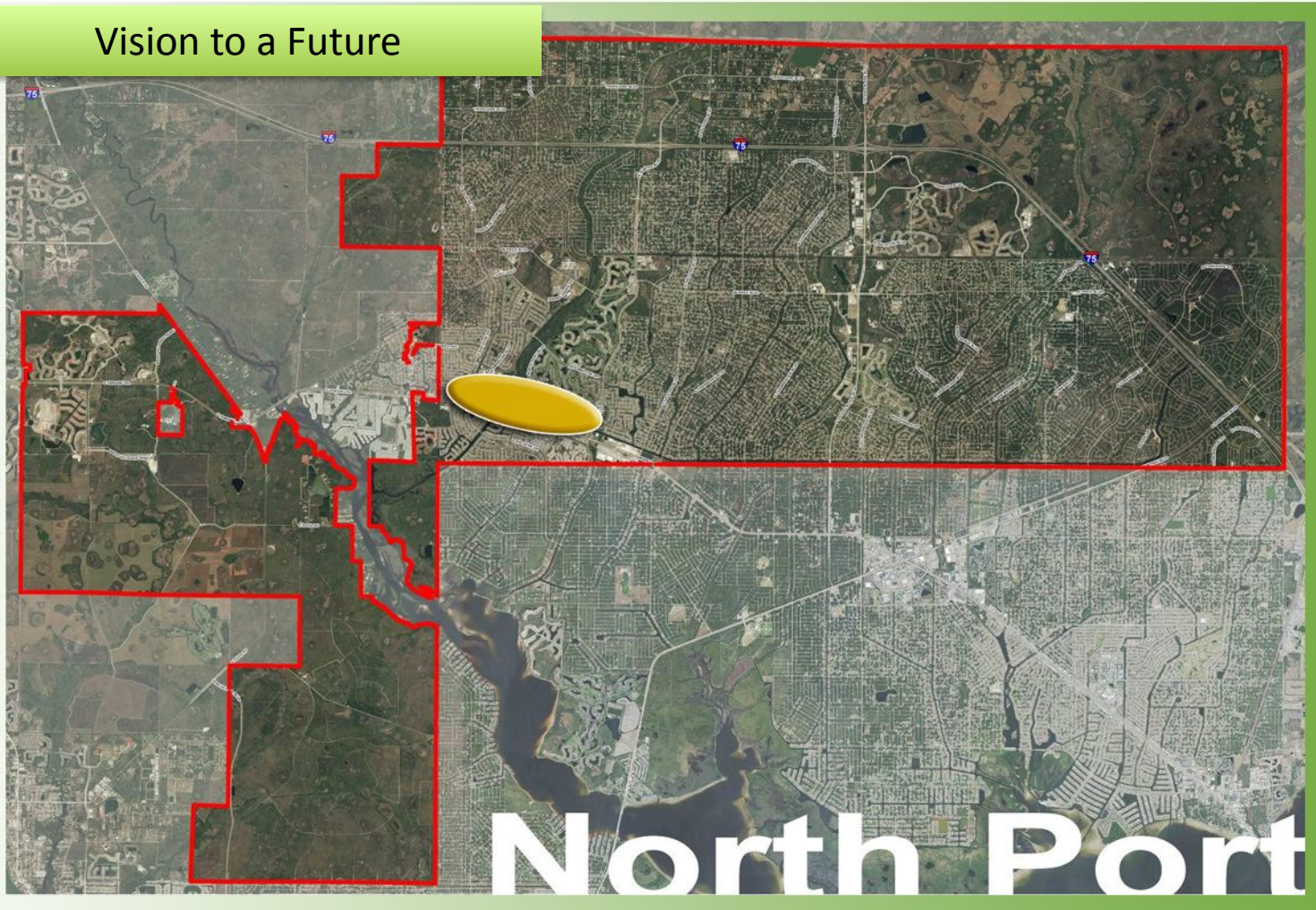
1. Identify **economic engines** required to create economic metabolism
2. Identify **location(s)** where the initiative can flourish
3. Quantify **revenue and cost** elements for the initiative
4. Identify **community partners**
5. Identify **funding sources** to quick start the initiative
6. Identify realistic time frames for **implementation**
(Include time frame with quick start funding and without quick start funding)
7. Gain **community support** of the initiative

Vision to a Future



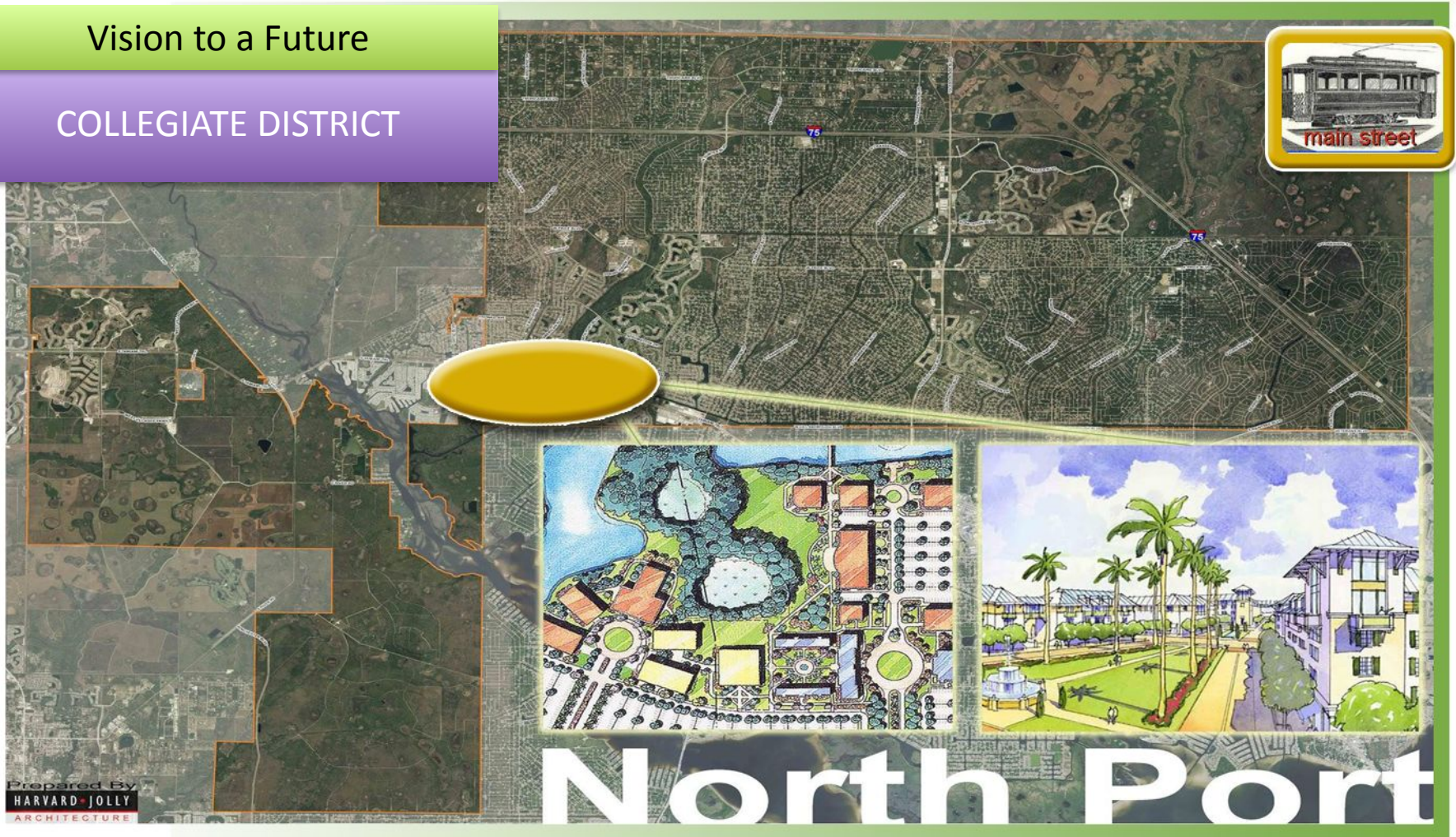
NOTE: The ACTION Initiatives represent a vision for North Port which the NPEDC believes is achievable. The timeframe for completion will depend on community buy in, identifying investors, and market/economic factors.

Vision to a Future



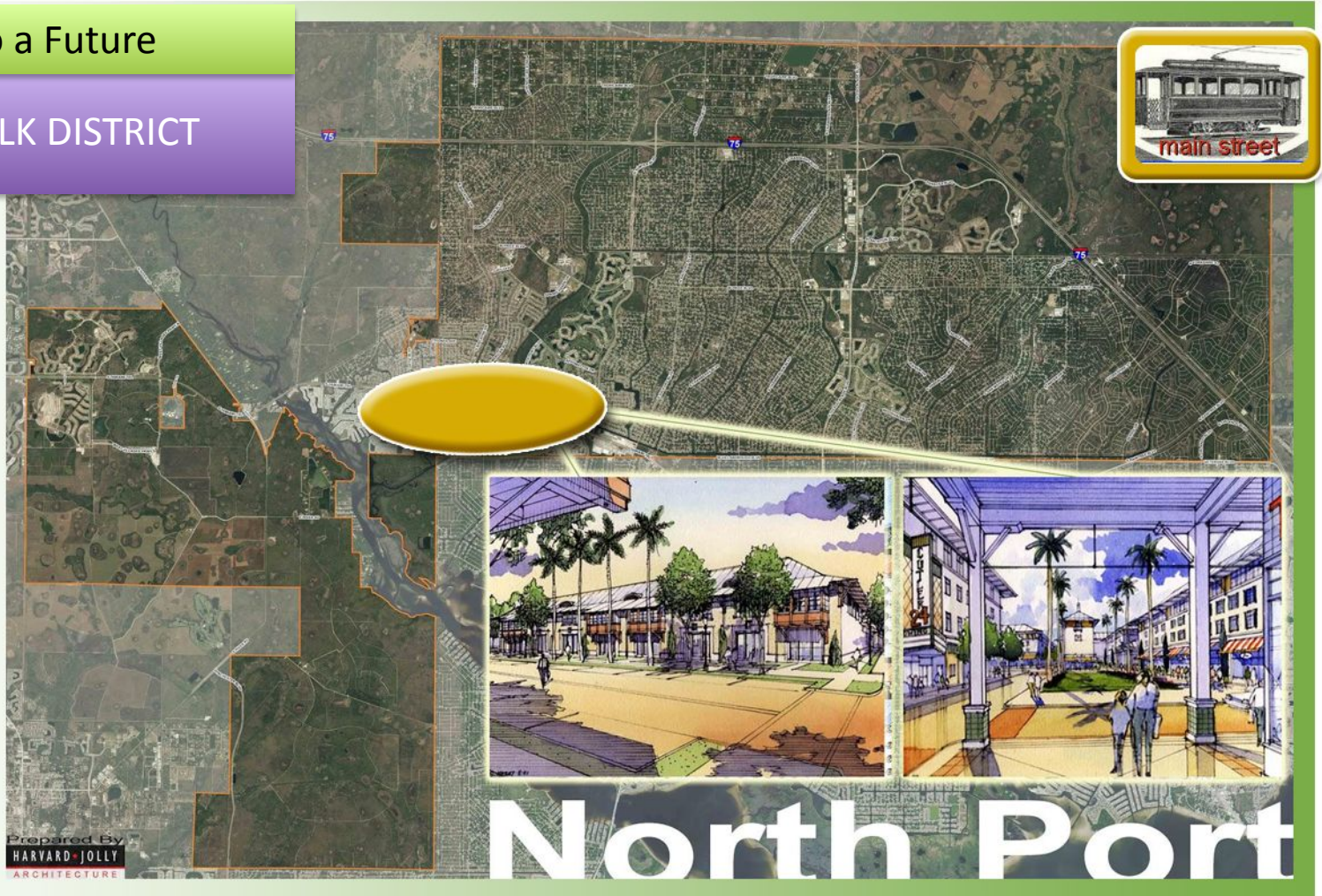
Vision to a Future

COLLEGIATE DISTRICT



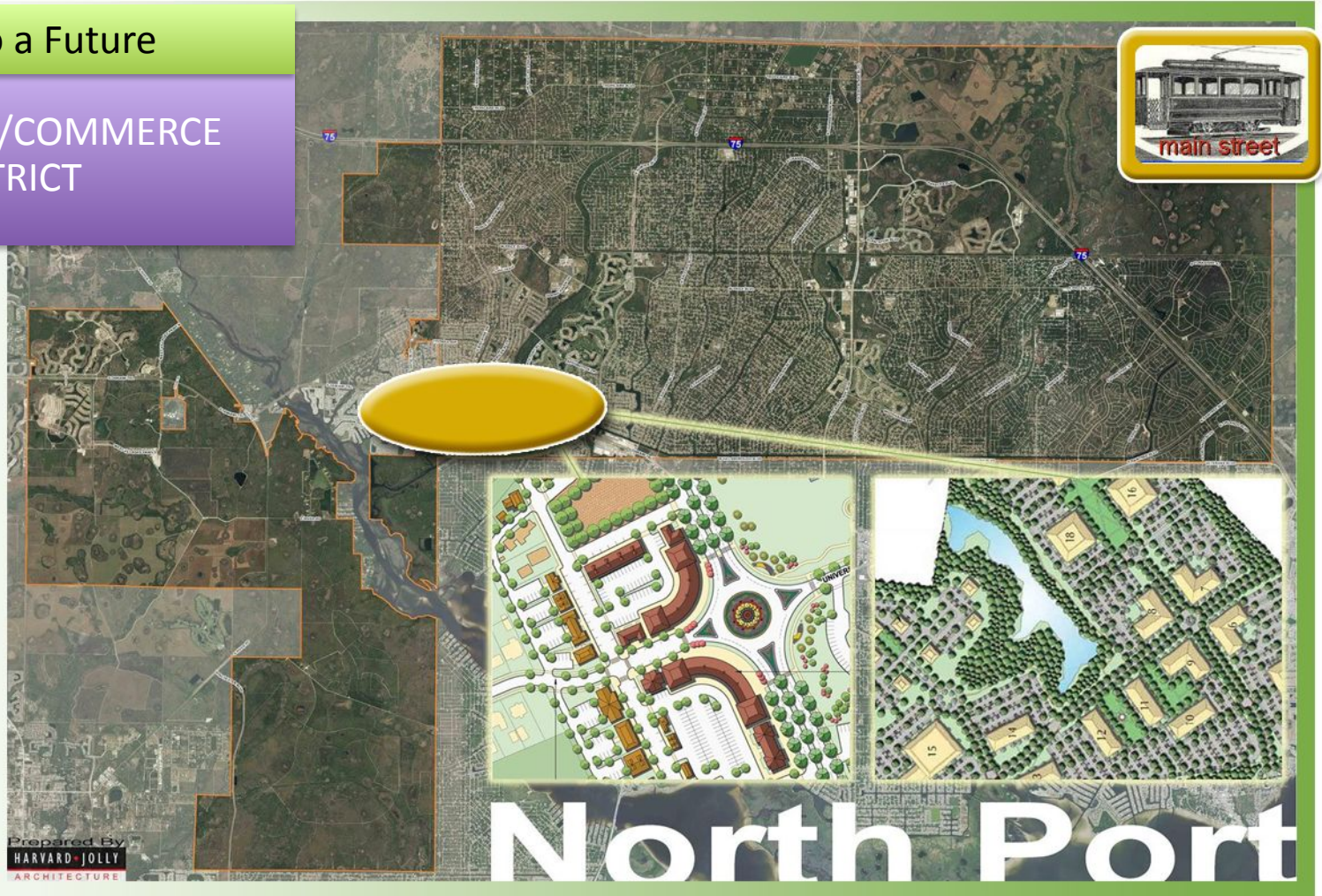
Vision to a Future

CANAL WALK DISTRICT



Vision to a Future

CORPORATE/COMMERCE DISTRICT

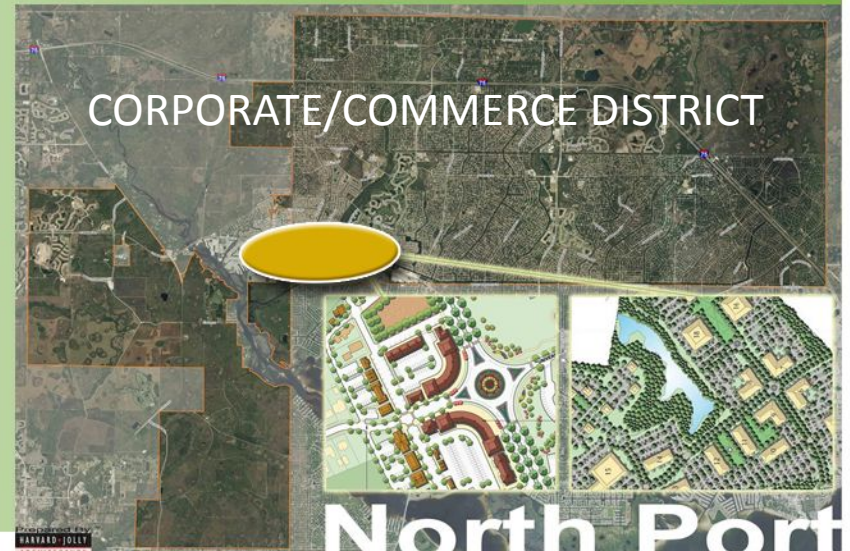
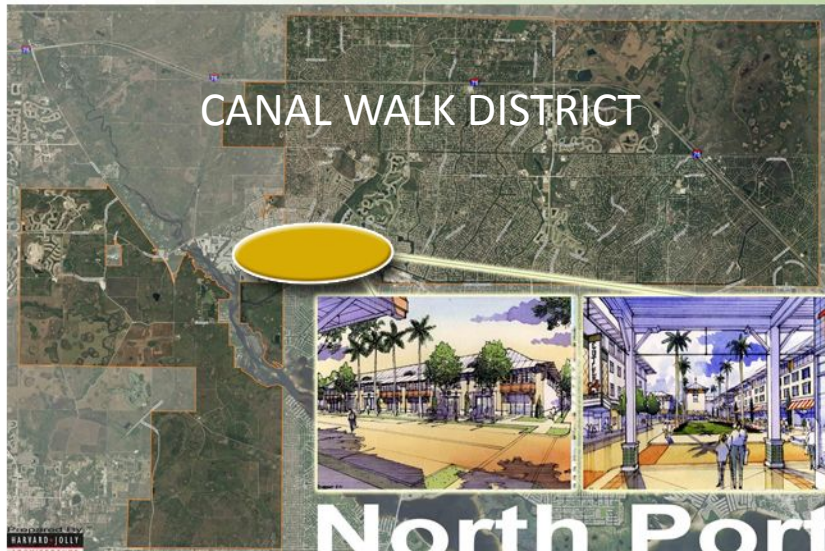
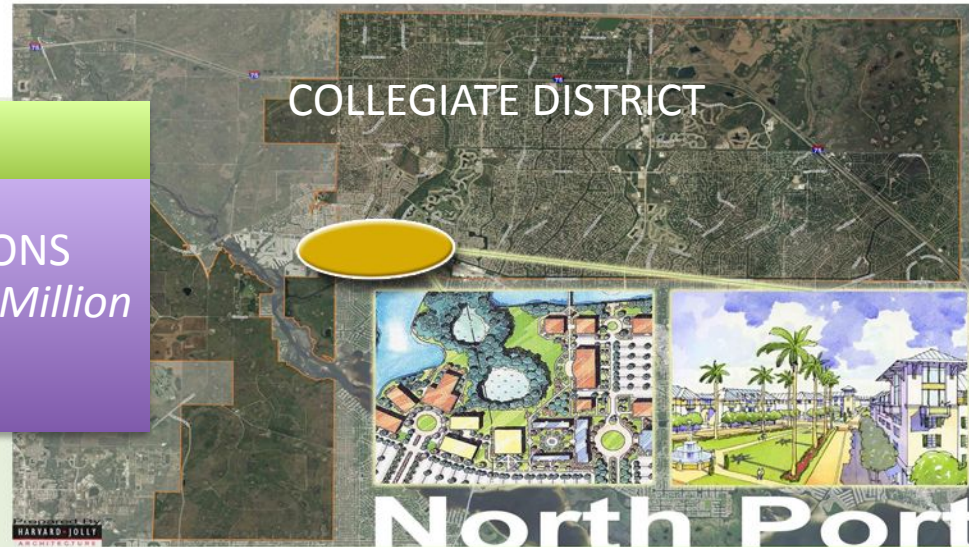


Vision to a Future

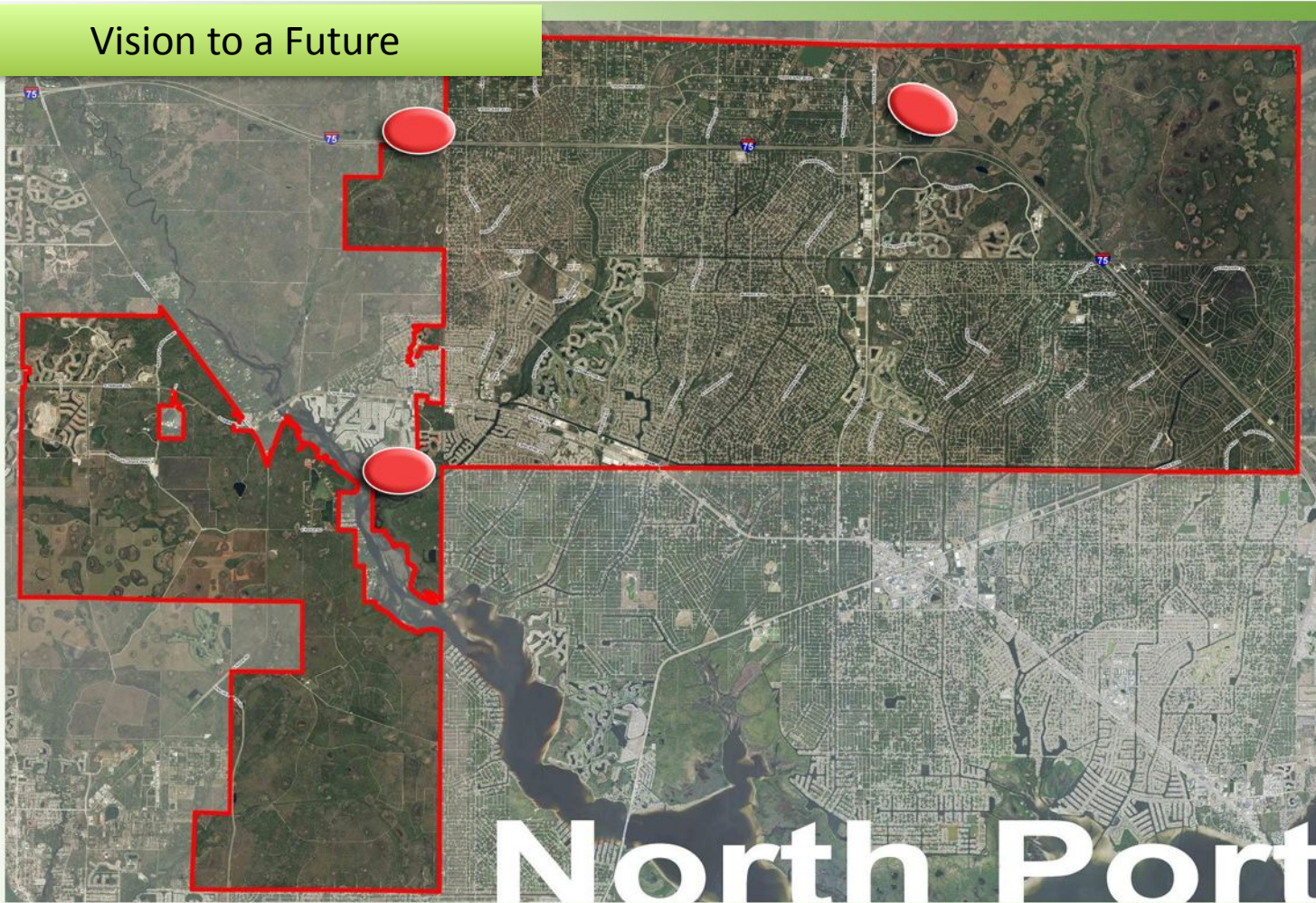
ECONOMIC PROJECTIONS

Construction: \$60 - \$150 Million

Jobs: 300+



Vision to a Future



Eco Tourism Activities

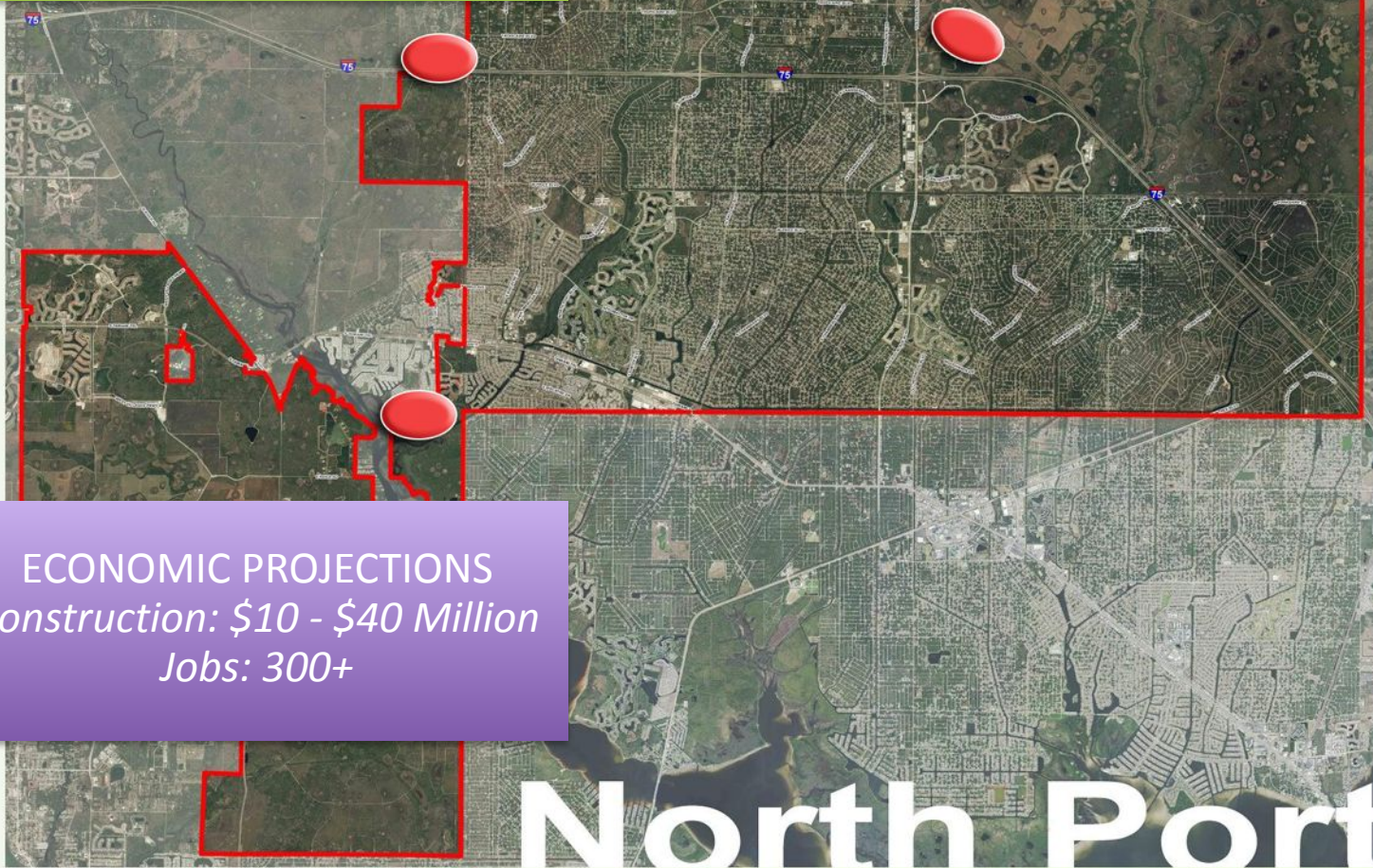
eco tourism



Eco Tourism Lodges



Vision to a Future

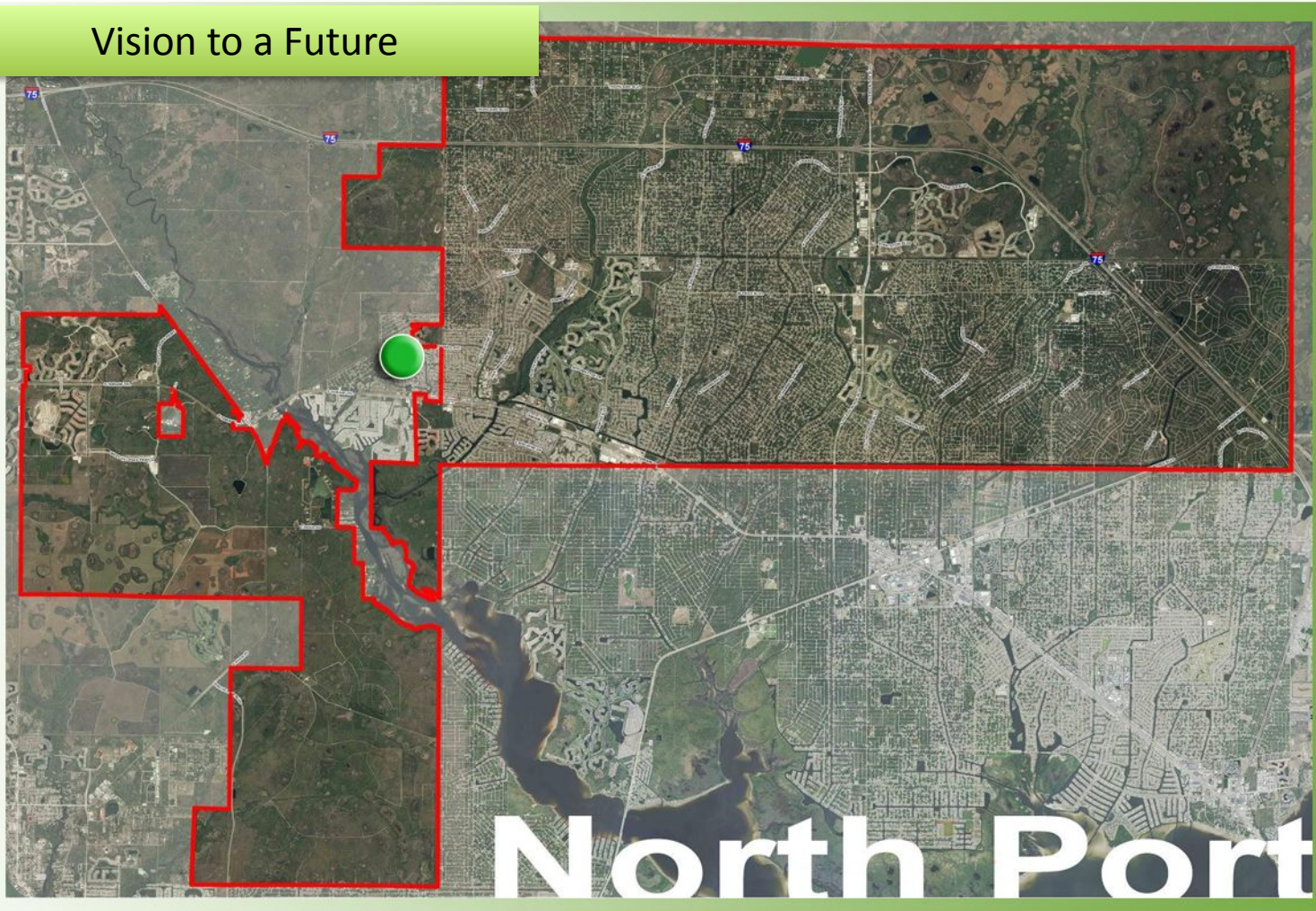


ECONOMIC PROJECTIONS
Construction: \$10 - \$40 Million
Jobs: 300+



ECO LODGES (3)
*INTEGRATION
WITH TRAILS,
EQUESTRIAN,
WATER*

Vision to a Future



Vision to a Future

Warm Mineral Springs Resort & Spa



Panoramic Perspective Sketch of Villas, Spa, Hotel and Conference Facing the Mineral Spring



Panoramic Perspective Sketch of Visitor Center Facing the Mineral Spring



Panoramic Perspective Sketch of Hotel Arrival

Vision to a Future

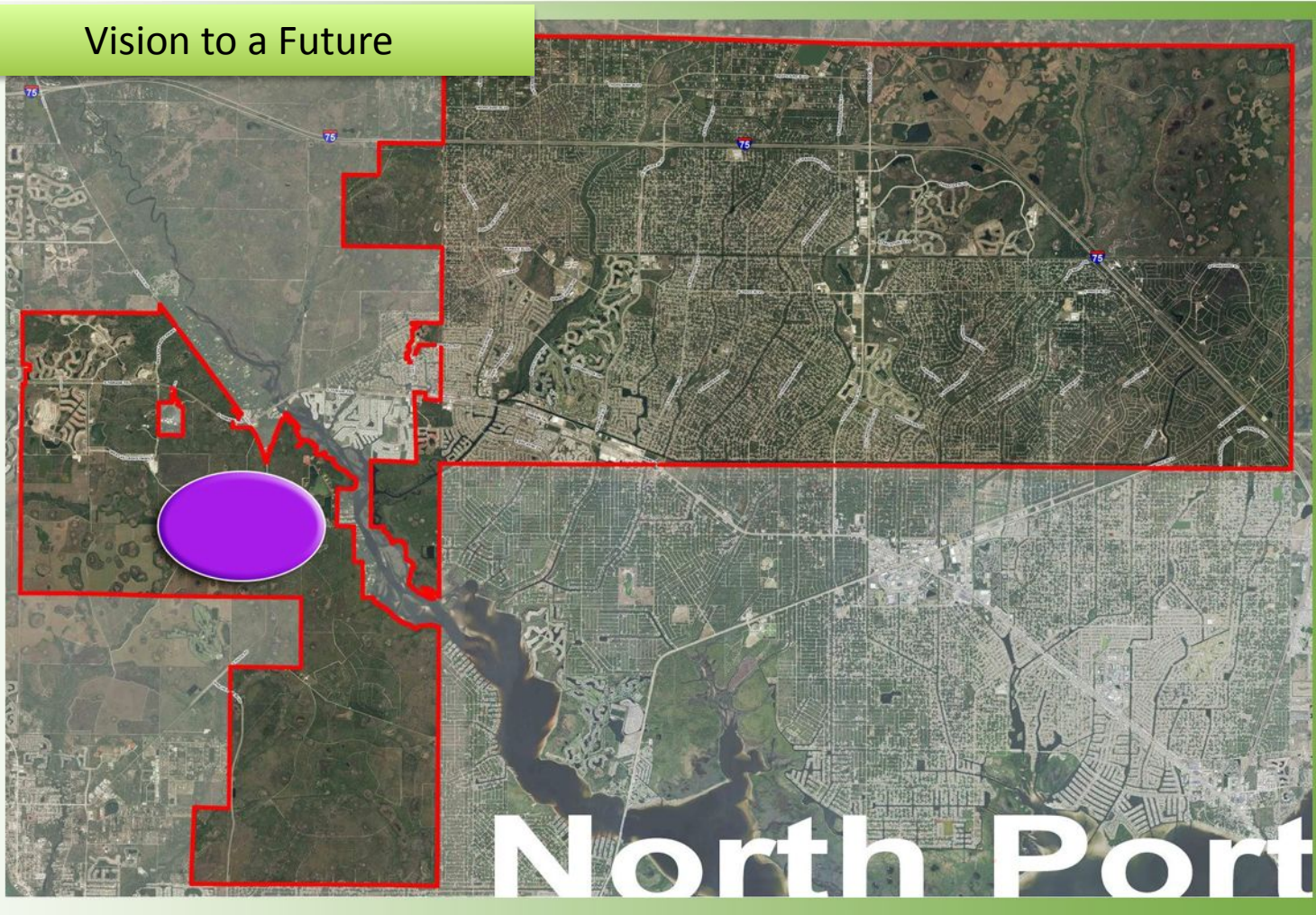
ECONOMIC PROJECTIONS
Construction: \$20 - \$80 Million
Jobs: 300+

Position on ITN

- Preserve the spring
- Resort on premise
- Wellness
- Public access



Vision to a Future

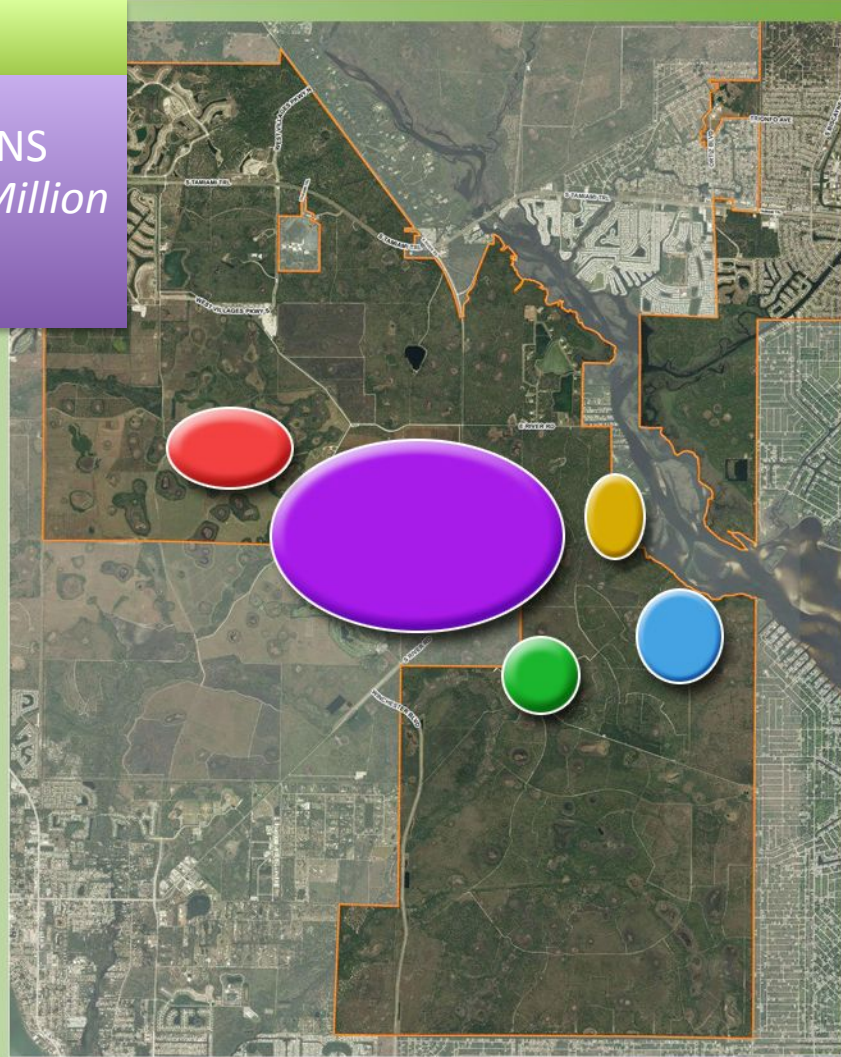


Vision to a Future

ECONOMIC PROJECTIONS

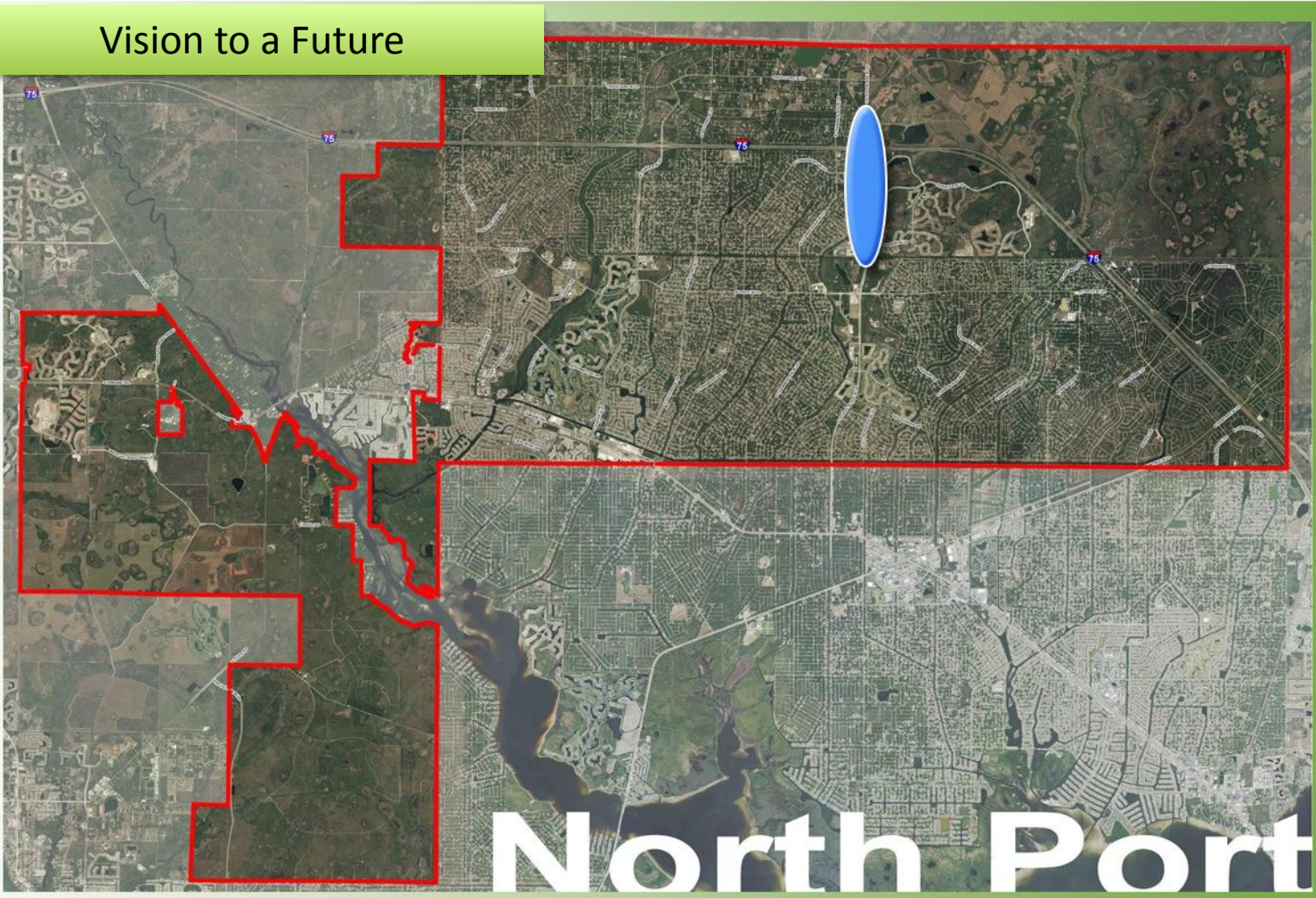
Construction: \$80 - \$200 Million

Jobs: 300+



Eco Lodge
Education Center
School of
Hospitality
Culinary Institute
Town Center

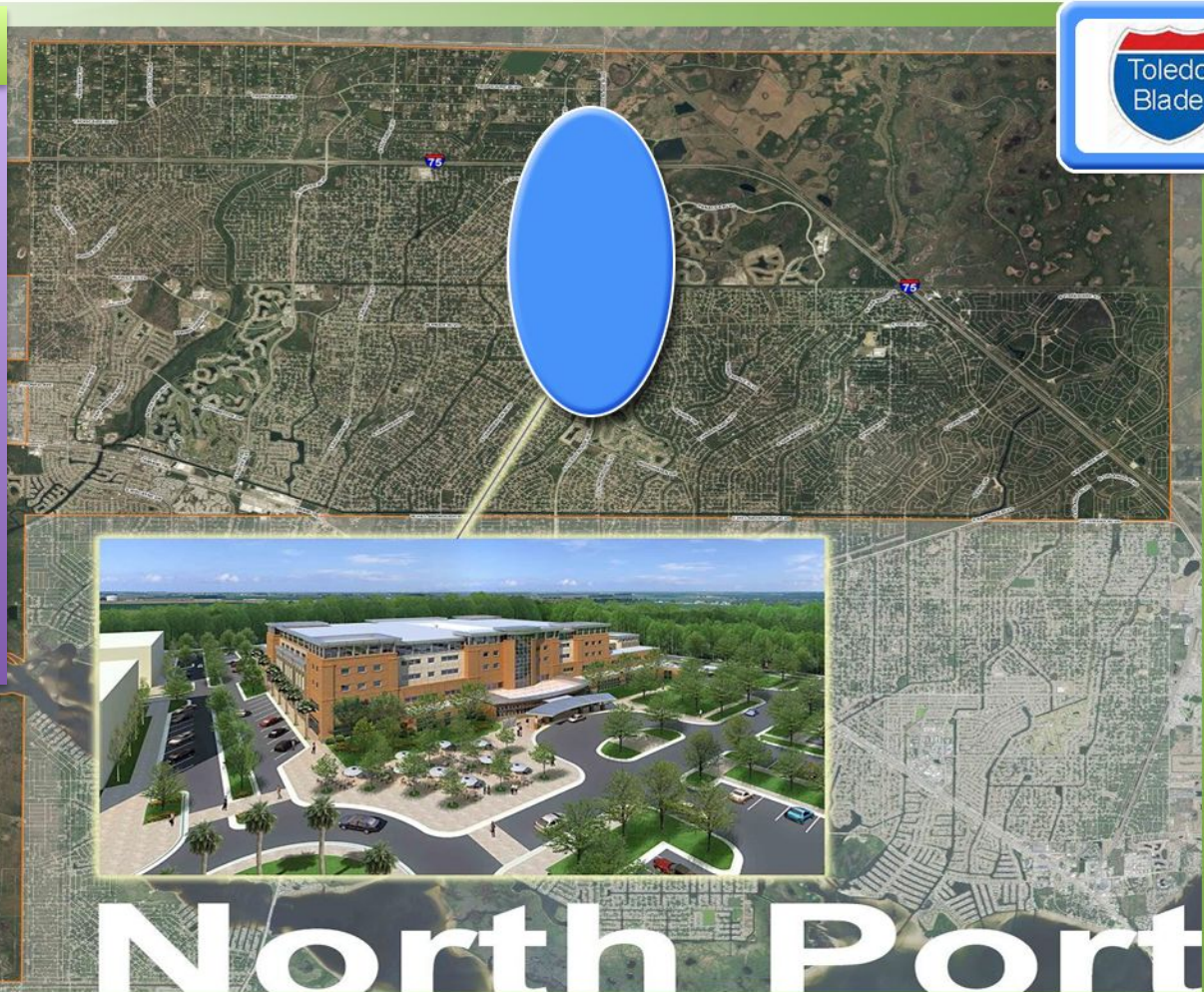
Vision to a Future



Vision to a Future

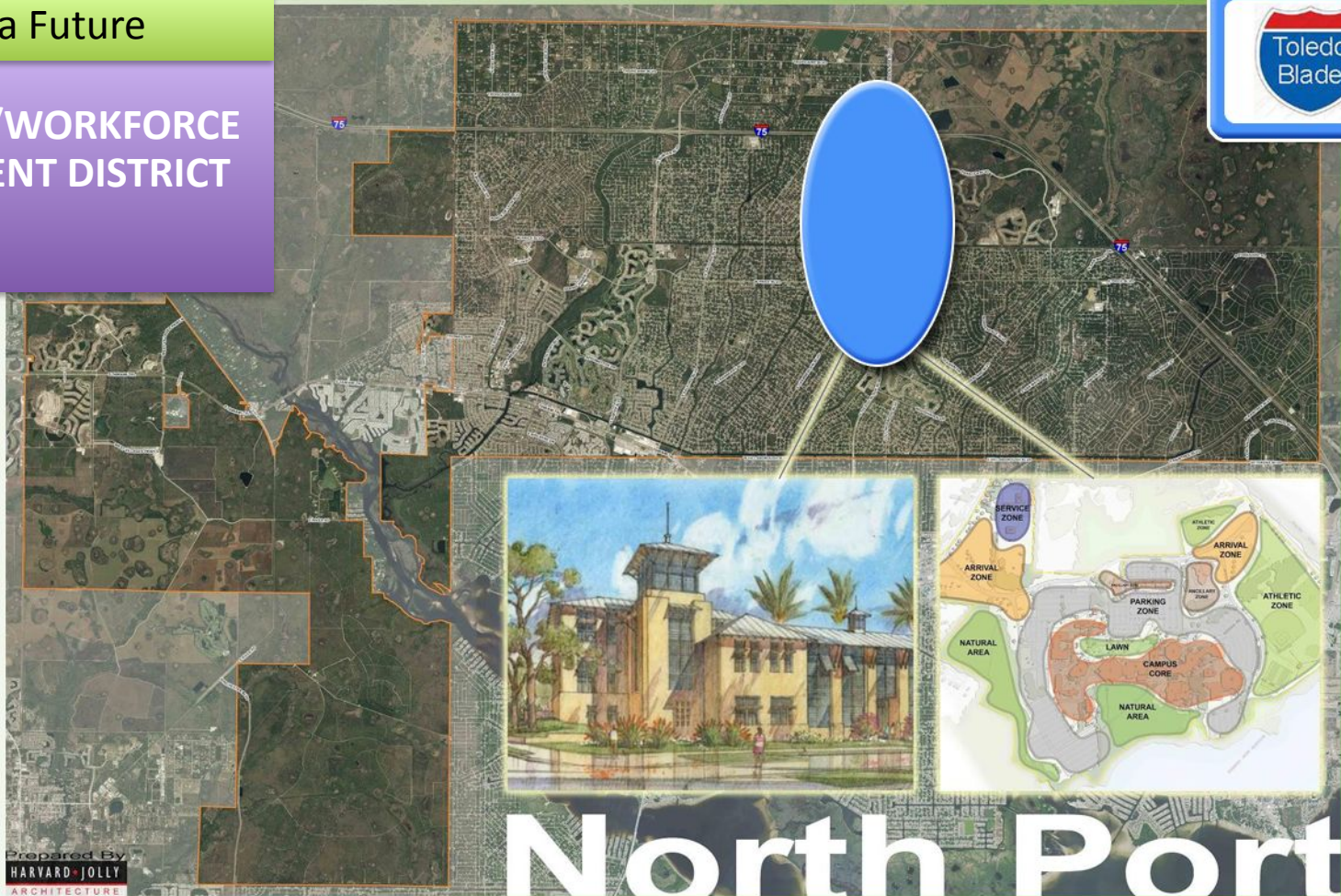
HEALTHCARE DISTRICT

- Teaching Hospital
- Teaching Clinic
- Children's Hospital
- Women's Medical Center
- Telemedicine Center
- Medical Tech Institute
- Research (senior medicine)
- And More



Vision to a Future

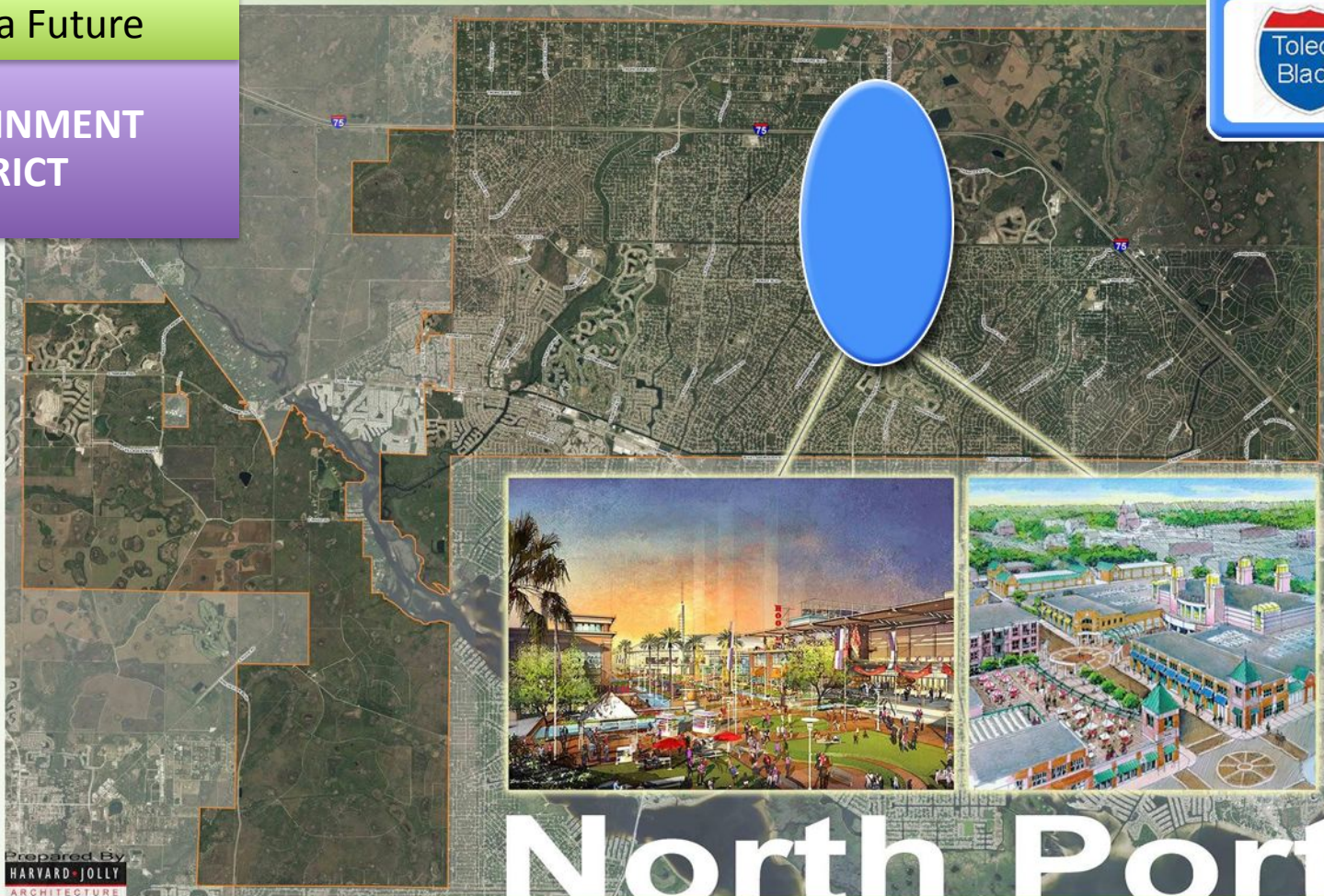
EDUCATION/WORKFORCE DEVELOPMENT DISTRICT



Prepared By
HARVARD JOLLY
ARCHITECTURE

Vision to a Future

ENTERTAINMENT
DISTRICT



Prepared By
HARVARD JOLLY
ARCHITECTURE

North Port

Vision to a Future

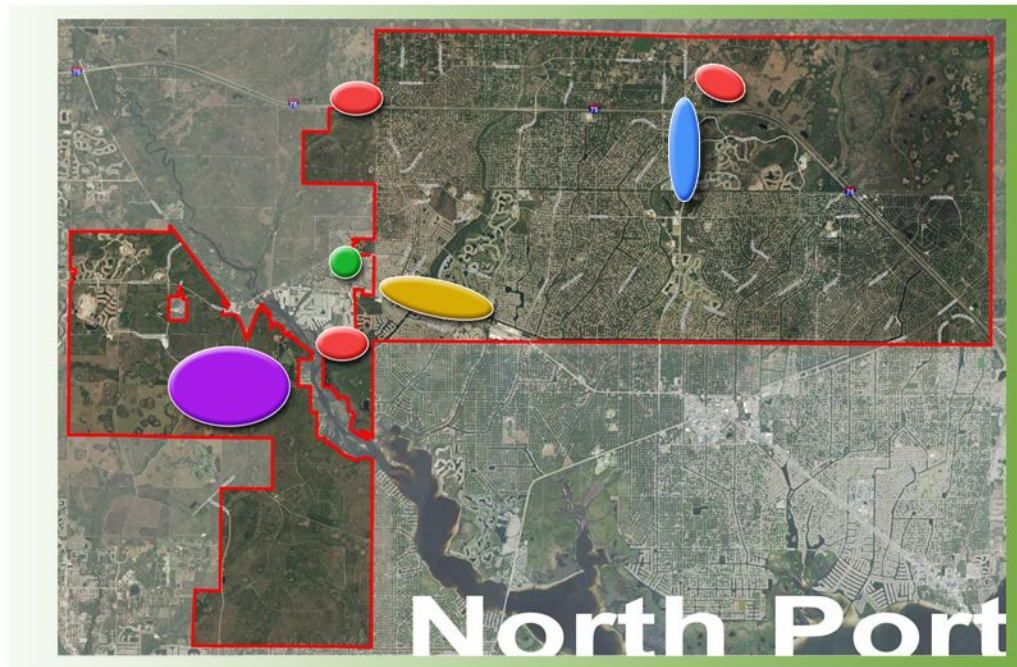
ECONOMIC PROJECTIONS

*Construction: \$100 - \$300 Million
 Jobs: 500+*



Vision to a Future

TOTAL CONSTRUCTION \$270 - \$770 MM
TOTAL JOBS 1,700+



Construction:
\$60-\$150 Million
Jobs: 300+



Construction:
\$20-\$80 Million
Jobs: 300+



Construction:
\$10-\$40 Million
Jobs: 300+



Construction:
\$80-\$200 Million
Jobs: 300+



Construction:
\$100-\$300 Million
Jobs: 500+

NOTE: The ACTION Initiatives represent a vision for North Port which the NPEDC believes is achievable. The timeframe for completion will depend on community buy in, identifying investors, and market/economic factors.

NORTH PORT EDC MEMBERS & GROWING...

Achievements Learning Center
Adache Group Architects
BB&T Bank
CADwerks
Calusa National Bank
Cindy Spirk
ClikWiz
Core Construction
Fawcett Memorial Hospital
Fourth Quarter Properties
Gene Matthews
Gilbane Building Company
Grapevine Communications Advertising Agency
Gulf Coast Builders Exchange
Gulf Coast Community Foundation
Halfacre Construction
Harvard Jolly Architecture
Jolotta Enterprises
J.E. Charlotte Construction Corp
Ken Maturo
Key Agency

Louise Hall
Mark Asperilla
Mark Klingel, CPA
North Port Area Chamber of Commerce
North Port Computers
North Port High School
North Port Taekwondo
Norton, Hammersley, Lopez & Skokos
Peace River Medical Center
Publix
Robert McMillan
Robert Rosenberg
ROI Media
Sarasota Memorial Hospital
School of Opportunity
Suncoast Workforce
USF Sarasota-Manatee
TaxSavers
The Power and Light Company, LLC
Vaccaro Co. of Naples/The Ostermann Co.
Venice Regional Medical Center
Vision North Port
Walmart
Watermark Engineering
WMS Sarasota, LLC

NEXT STEPS

Ongoing Community Participation
Explore Public/Private Partnerships
Explore Community/Regional Partnerships
Create Investment Opportunities

*“Cities change because
people of vision and commitment come together
to dream the future”*

– David Jones, Principal of NP High School
NPEDC Board Member

THANK YOU!

Be a part of North Port's Future

www.northportedc.com

